

## Technical Data Sheet

# Durawatt®

## Electric Packaged Water Heater

PVI's Durawatt is an energy-efficient, emission-free electric water heater with storage capacity. It is designed to support a wide range of building electrification and decarbonization projects as it is 100% electric, burns no fuel, and is an extremely environmentally friendly solution when electricity is sourced from renewables.

Underscored by an industry-leading warranty, Durawatt offers a durable, reliable electric water heating solution. The storage tank is fabricated with AquaPLEX® duplex stainless steel which is highly corrosion-resistant and allows for higher storage temperatures. The design of individual incoloy sheathed heating elements simplifies maintenance and protects from damaging corrosive media.

The storage tank is fabricated with AquaPLEX® duplex stainless steel which is highly corrosion-resistant and allows for higher storage temperatures. The design of individual incoloy sheathed heating elements simplifies maintenance and protects from damaging corrosive media.



### Key Features

- Up to 98% thermal efficiency
- 18kW to 234kW input\*
- 150 to 750-gallon storage\*
- AquaPLEX duplex alloy unlined storage tank (no anode rods needed)
- Non-ferrous, removable tank connections
- Incoloy heating elements can be energized in up to 10 stages
- Supply voltages of 208/3, 240/3, 380/3, 480/3 (standard) or 600/3

### Designed for Durability and Simpler Maintenance

- Industry-leading 25-year tank warranty (15 full, 10 prorated)
- AquaPLEX storage tank is highly corrosion resistant
- Built with an inherently corrosion-proof, non-ferrous tank fitting
- Individual Incoloy sheathed heating elements for simplified, cost-efficient replacement

- No gas line, venting or consumables and fewer moving parts can reduce maintenance requirements compared to gas water heaters

### Customizable to Site-Specific Needs

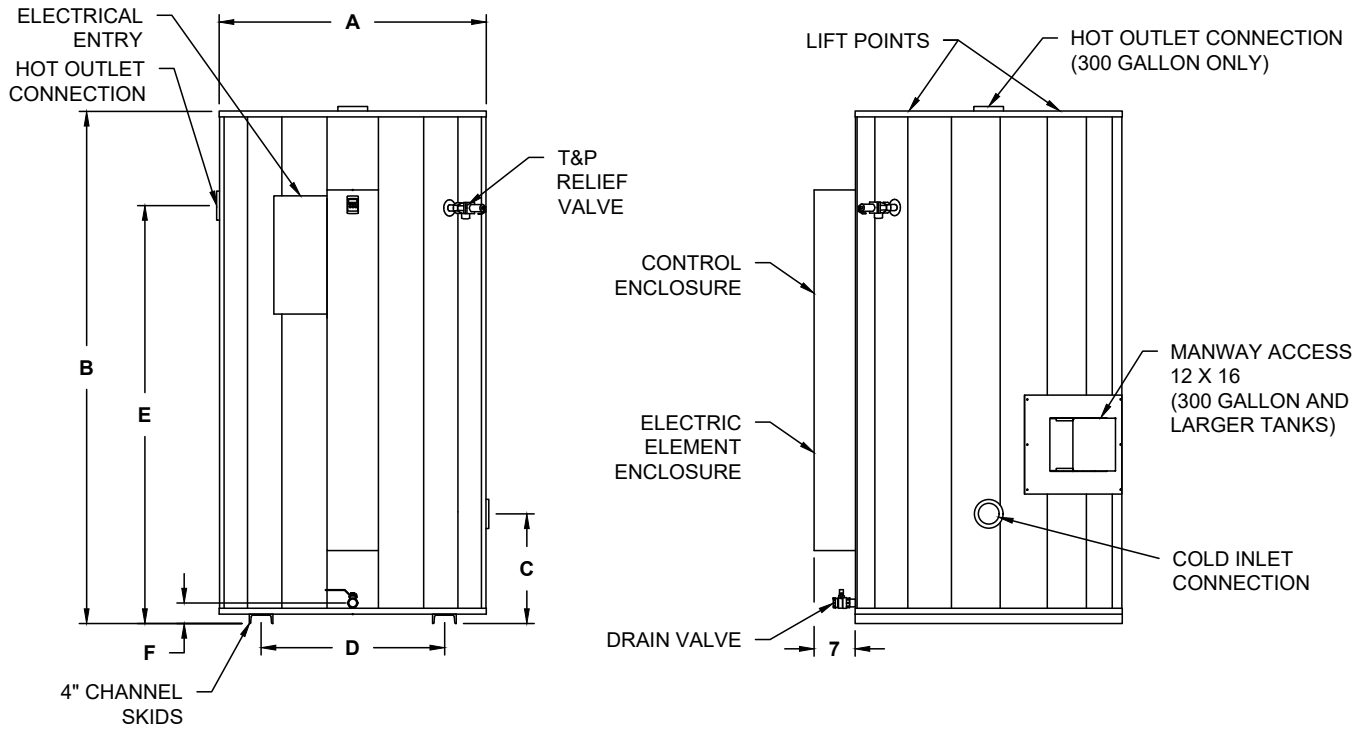
- Energy input up to 360 kW and tank size up to 3,000 gallons
- Combine with another fuel type in a single tank for dual fuel option
- Electropolished incoloy for more aggressive potable water
- Custom fabrication for deionized and reverse osmosis water

### Ideal for a Variety of Applications

- Stand-alone, fully electric water heating plant with ample storage for peak demand
- Backup heating, recirculation loss mitigation, and hot water storage in heat pump systems
- Combined with gas-fired solution or select a dual fuel option (custom fabrication) for versatility

\*Customizable up to 360kW and 3,000 gallons.

# Dimensions



Tank Series 150-2000 Gallons									
Gallons Storage	Dimensions in Inches						Water Inlet and Outlet Connections NPT	Drain Valve NPT	Approx. Shipping Weight lbs
	A	B	C	D	E	F			
150	34x37	65	16	21	51	2 9/16	2	1	1130
200		73			59				1220
250		85			71				1265
300	46	75	19	31	@top	2 3/4	2	1	1295
400		87			70				1340
500	56	78	23	31	59	3	3	1 1/2	1765
600		90			71				1990
750	67	83	23	40	63	3 11/16	3	1 1/2	2130
900		95			75				2350
1000		107			87				2570
1250	75	96	23	47	76	3 7/16	3	1 1/2	3390
1500		108			88				3605
1750		132			112				4045
2000		144			124				4520

Dimensions are in inches unless otherwise noted.  
 For larger storage capacities, consult factory.  
 Includes R-12.5 insulation.  
 ASHRAE 90.1 compliant.

PVI reserves the right to change the design and specification without notice.  
 Tank sizes 1000, and 1500-2000 gallon include horizontal shipping skids (not shown).

# Electrical Connection

Sizes (208V 1Ø, 240V 1Ø, 208V 3Ø, 240V 3Ø, 380V 3Ø, 480V 3Ø, 600V 3Ø)

Model Prefix	kW	Btu/hr	Recovery Rate GPH		240V 3Ø			380V 3Ø			480V 3Ø			600V 3Ø		
			40°-120°F	40°-140°F	Amps	No.	Size MCM	Amps	No.	Size MCM	Amps	No.	Size MCM	Amps	No.	Size MCM
45	9	31,000	47	37	24	3	2/0	16	3	2/0	13	3	2/0	11	3	2/0
90	18	62,000	93	74	46	3	2/0	29	3	2/0	24	3	2/0	19	3	2/0
140	27	93,000	140	112	67	3	2/0	43	3	2/0	35	3	2/0	28	3	2/0
180	36	123,000	185	148	89	3	2/0	57	3	2/0	46	3	2/0	37	3	2/0
230	45	154,000	231	185	111	3	2/0	70	3	2/0	57	3	2/0	45	3	2/0
270	54	185,000	278	222	132	3	2/0	84	3	2/0	67	3	2/0	54	3	2/0
320	63	215,000	323	258	154	3	350	98	3	2/0	78	3	2/0	63	3	2/0
370	72	246,000	369	295	176	3	350	111	3	2/0	89	3	2/0	71	3	2/0
410	81	277,000	416	332	197	3	350	125	3	2/0	100	3	2/0	80	3	2/0
460	90	308,000	462	370	219	3	350	139	3	2/0	111	3	2/0	89	3	2/0
510	99	338,000	507	406	241	3	350	152	3	350	122	3	2/0	97	3	2/0
550	108	369,000	554	443	262	6	500	166	3	350	132	3	2/0	106	3	2/0
650	126	430,000	645	516	306	6	500	193	3	350	154	3	350	123	3	2/0
740	144	492,000	738	590	349	6	500	221	3	350	176	3	350	141	3	2/0
830	162	553,000	830	664	392	6	500	248	3	350	197	3	350	158	3	350
920	180	615,000	923	738	436	6	500	275	3	500	219	3	350	175	3	350
1010	198	676,000	1014	811	478	6	500	303	3	500	240	3	350	193	3	350
1100	216	738,000	1107	886	522	6	500	330	3	500	262	6	500	210	3	350
1200	234	799,000	1199	959	565	6	500	358	3	500	283	6	500	228	3	350

Model Prefix	kW	Btu/hr	Recovery Rate GPH		208V 3Ø		
			40°-120°F	40°-140°F	Amps	No.	Size MCM
45	9	31,000	47	37	27	3	2/0
90	18	62,000	93	74	52	3	2/0
140	27	93,000	140	112	77	3	2/0
180	36	123,000	185	148	102	3	2/0
230	45	154,000	231	185	127	3	2/0
270	54	185,000	278	222	152	3	350
320	63	215,000	323	258	177	3	350
370	72	246,000	369	295	202	3	350
410	80	273,000	410	332	224	3	350
460	90	308,000	462	370	253	6	500
510	99	338,000	507	406	278	6	500
540	105	359,000	539	431	294	6	500
610	120	410,000	615	492	336	6	500
690	135	461,000	692	553	378	6	500
770	150	512,000	768	614	419	6	500
840	165	564,000	846	677	461	6	500
920	180	615,000	923	738	503	6	500
1000	195	666,000	999	799	545	6	500
1080	210	717,000	1076	860	Consult Factory		
1160	225	768,000	1152	922			
1240	240	819,000	1229	983			

Model Prefix	kW	Btu/hr	Recovery Rate GPH		208V 1Ø			240V 1Ø		
			40°-120°F	40°-140°F	Amps	No.	Size MCM	Amps	No.	Size MCM
45	9	31,000	47	37	45	3	2/0	40	3	2/0
90	18	62,000	93	74	89	3	2/0	77	3	2/0
140	27	93,000	140	112	132	3	2/0	115	3	2/0
180	36	123,000	185	148	175	3	350	152	3	350
230	45	154,000	231	185	218	3	350	190	3	350
270	54	185,000	278	222	262	6	500	227	3	350
320	63	215,000	323	258	305	6	500	265	6	500
370	72	246,000	369	295	348	6	500	302	6	500
410	81	277,000	416	332	391	6	500	340	6	500
460	90	308,000	462	370	435	6	500	377	6	500
510	99	338,000	507	406	478	6	500	415	6	500
550	108	369,000	554	443	521	6	500	452	6	500
650	126	430,000	645	516	Consult Factory					
740	144	492,000	738	590						
830	162	553,000	830	664						
920	180	615,000	923	738						
1010	198	676,000	1014	811						
1100	216	738,000	1107	886						
1200	234	799,000	1199	959						

All distribution blocks on the connection side are rated for 600V.  
Refer to the latest edition of the National Electrical Code for conductor sizing.  
40 w/in<sup>2</sup> elements are standard for up to 370 prefix; 80 w/in<sup>2</sup> elements are standard for 370 prefix and more.

**Standard Electrical Requirements**

Control circuit transformer supplied and AC neutral conductor for grounding.

**Alternate Voltages**

For 230/460V, multiply kW and recovery by .92. multiply AMPS by .96.  
For 220/440V, multiply kW and recovery by .84. multiply AMPS by .92.

# Standard and Optional Equipment



## Standard Features and Equipment

### Pressure Vessel

- AquaPLEX tank (unlined duplex stainless steel)
- ASME stamped and National Board Registered for 150 psi Maximum Allowable Working Pressure
- Nonferrous, removable fittings at all tank connections
- ASME-rated temperature and pressure relief valve
- 12x16 manway access on 300 gallon tank series and larger, removable top head ≤ 250 gallons
- Non-ferrous, removable tank fittings
- Fiberglass insulation and coated steel jacket panels
- Bottom drain valve
- Tie down anchor points on tank
- Lifting lugs

### Heating Elements

- Heavy-duty Incoloy® heating elements rated at 40 Watts per square inch heat density up to 370 prefix. Prefixes above 370 require 80 Watts per square inch heat density

### Electrical Circuitry

- Supply voltages available: 208V, 3Ø ; 240V, 1Ø ; 240V, 3Ø ; 380V, 3Ø ; 480V, 3Ø ; 600V, 3Ø
- 120V control circuit via supplied transformer
- Fused magnetic contactors for each power circuit (50 amp maximum per circuit on 3Ø units)
- Control circuit switch, fuse and pilot light
- Remote on-off terminals
- Safety door interlock

### Operating and Safety Controls

- Programmable electronic operating control with digital temperature readouts
- Immersion high-temperature limit
- Electronic low-water cutoff with test and reset

### Warranty and Service Policy

- 25-year tank warranty (PV901)<sup>1</sup>
- 1-year electric element warranty (PV535)<sup>1</sup>
- 1-year cost-free service policy (PV551)<sup>1</sup>
- Conditions exist outside of the continental US

## Codes and Standards

- Intertek/ETL listed
  - UL1453 / CAN/CSA-C22.2 No. 110-94
  - NSF 372 lead free
- ASHRAE 90.1 compliant

## Miscellaneous

- Factory authorized startup (available on most models check with PVI representative for details)

## Factory Options Packages

### 3 Alarm and Communications Package

- 485 serial cable to connect electronic operator to BAS (Modbus RTU)
- Alarm with switched contacts for remote notification
- 95dB local audible alarm with silencing switch

### Factory Installed Individual Options

- A** CSA-rated temperature and pressure relief valve(s)
- E** Water pressure gauge on drain piping
- F** Electronic proportional sequencer with indicating lights (72kW and higher)
- N** Celsius functionality for operating control

### Field Installed Options

(Ordered as a line item)

- Protocol gateways (Avail. with Option Package 3
  - Bacnet MSTP
- Installation kit (PN 143405)

### Optional Service Policy

Long-life service policy (PV559)<sup>1</sup>

*Conditions exist outside of the continental US*

### Custom Configuration

Consult representative for additional custom options

### Part Number Sequence

Base Model# + "Packages" + "Options" + "Voltage/Phase"

Example: 370 L 250AVE-3AE480V3

<sup>1</sup>See complete warranty and service policy for full details

PVI reserves the right to change the design and specification without notice.



Hot Water Solutions

PVI Industries • Fort Worth, TX

USA: T: (817) 335-9531 • Toll Free: (800) 784-8326 • PVI.com

Technical Support • (800) 433-5654 • Mon-Fri, 8 am - 5 pm CST/CDT