

Engineering Specification

Job Name _____

Contractor _____

Job Location _____

Approval _____

Engineer _____

Contractor's P.O. No. _____

Approval _____

Representative _____

BTC Transition Couplings

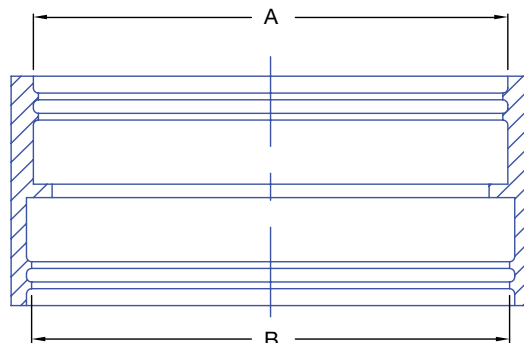
Specification:

BLÜCHER BTC AISI Type 301 stainless steel band and clamp with an inner neoprene rubber gasket. Transitions BLÜCHER stainless steel pipe or fittings with no hub cast iron or Schedule 40 piping systems.



Dimensional Chart

MODEL NO.	ORDER NO.	A		B
		BLUCHER PIPE	CAST IRON	SCH40
BTC-2x2	8187919	2"(50)	2"	2"
BTC-3x3-NH	8187920	3"(75)	3"	
BTC-3x3-SCH40	8187921	3"(75)		3"
BTC-4x4-NH	8187922	4"(110)	4"	
BTC-4x4-SCH40	8187923	4"(110)		4"
BTC-6x6-NH	8187924	6"(160)	6"	
BTC-6x6-SCH40	8187925	6"(160)		6"



Call customer service if you need assistance with technical details.

NOTICE

The information contained herein is not intended to replace the full product installation and safety information available or the experience of a trained product installer. You are required to thoroughly read all installation instructions and product safety information before beginning the installation of this product.

Approvals



Product is listed by IAPMO
R & T to ASME
A112.3.1-2007 (R2012)



A WATTS Brand

USA: T: (800) 338-2581 • Watts.com

Canada: T: (888) 208-8927 • Watts.ca

Latin America: T: (52) 55-4122-0138 • Watts.com

