

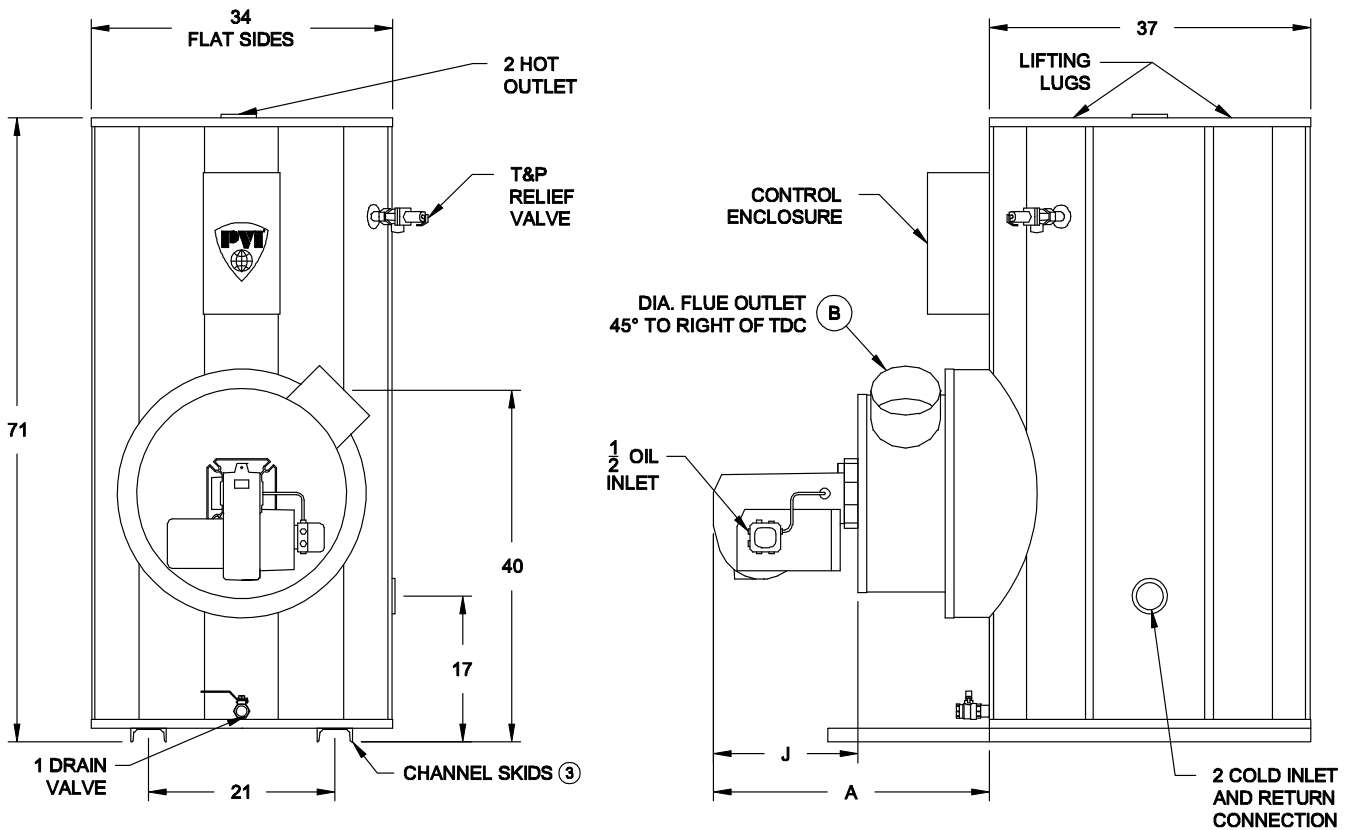
TURBOPOWER® OIL • PACKAGED WATER HEATER

AquaPLEX® STORAGE TANK (UNLINED DUPLEX ALLOY)

TANK SERIES 175 GALLONS

| Model Number | Recovery gph ① | | Input Btu/h | Gph #2 Oil | Max. oil gph (gear capacity) ④ | Dimensions (inches) | | | Blower Motor | | Shipping Weight lbs |
|-----------------|----------------|------------|-------------|------------|--------------------------------|---------------------|---|-----|--------------|--------------|---------------------|
| | 40°- 120°F | 40°- 140°F | | | | A | B | J ② | HP | Volt/Ph/Amps | |
| 500 L 175A-TPO | 500 | 400 | 399,000 | 2.8 | 70 | 27 | 5 | 17 | 1/2 | 115/1Ø/10 | 1230 |
| 750 L 175A-TPO | 750 | 600 | 600,000 | 4.3 | 70 | 41 | 6 | 17 | 1/2 | 115/1Ø/10 | 1310 |
| 1000 L 175A-TPO | 1000 | 800 | 800,000 | 5.7 | 70 | 41 | 8 | 17 | 1/2 | 115/1Ø/10 | 1330 |

- ① Recoveries based on 83% thermal efficiency. ASHRAE 90.1 compliant for efficiency and standby loss.
- ② "J" dimension is for the burner housing only.
- ③ 4" x 37 1/2" Channel skids for inputs ≤ 400 MBtu/h.
4" x 54 1/2" Channel skids for inputs ≥ 600 MBtu/h.
- ④ Standard gear capacities may change depending on burner supplier.
Designer must use gear capacities from the above chart to size the oil distribution piping system; including transfer pumps (if used).
Dimensions are in inches unless otherwise specified.
For standard and optional equipment, see form PV 8166.



VENTING REQUIREMENTS

-.02" TO -.06" W.C. (NEGATIVE PRESSURE)

ENTIRE VENT SYSTEM SHOULD NEVER BE SIZED BASED UPON THE VENT CONNECTION DIAMETER EXCLUSIVELY. FOR PROPER SIZING, CONSULT VENTING SUPPLIER.

STANDARD ELECTRICAL REQUIREMENTS

CONTROL VOLTAGE: 120V, 1Ø, 60 HZ., 2 AMPS.
MOTOR VOLTAGE: 208V, 230V, AND 460V MOTORS ARE AVAILABLE BUT WILL REQUIRE A SEPARATE 120V/2 amps CONTROL CIRCUIT OR AN OPTIONAL CONTROL CIRCUIT TRANSFORMER.

PVI RESERVES THE RIGHT TO CHANGE THE DESIGN AND SPECIFICATION WITHOUT NOTICE.

