

QuickDraw® BOILER WATER SINGLE-WALL PACKAGED WATER HEATER with AquaPLEX® STORAGE TANK

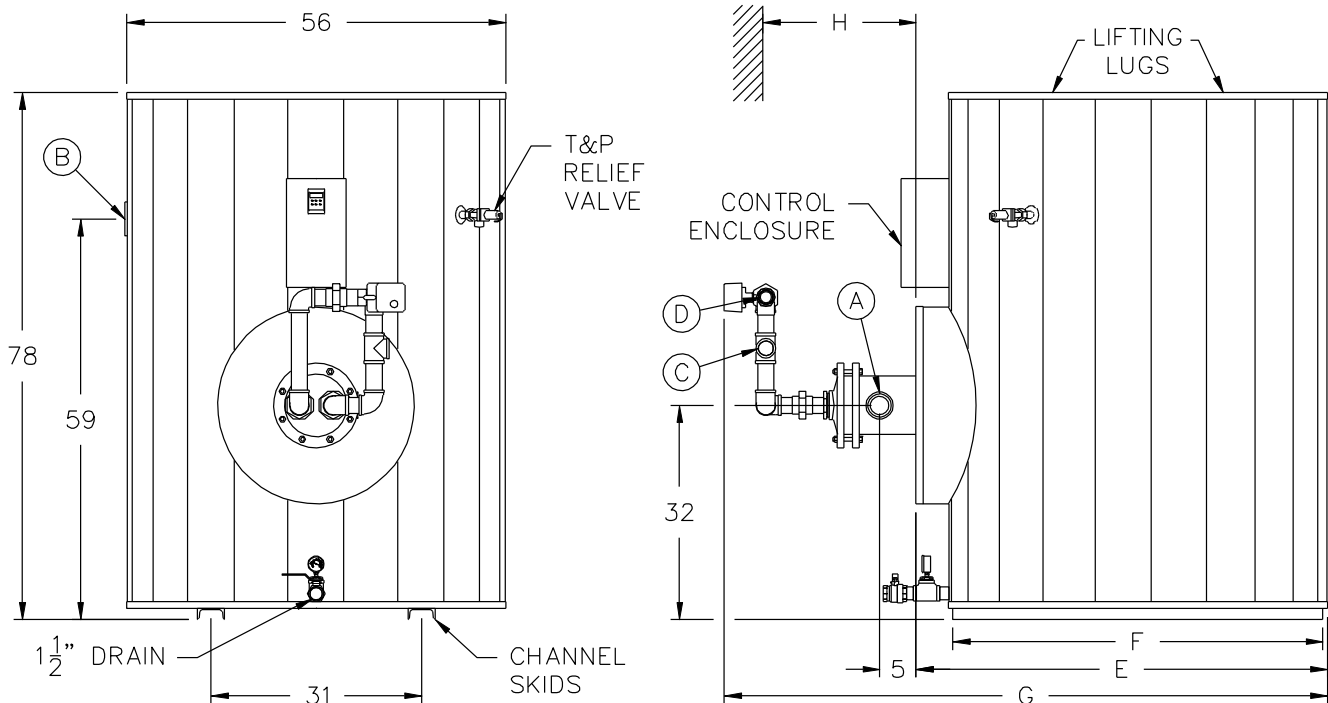
TANK SERIES 500 GALLON

| MODEL NUMBER | STANDARD RECOVERY RATE | STANDARD BOILER WATER FLOW | A COLD INLET NPT | B HOT OUTLET NPT | C BOILER WATER INLET NPT | D BOILER WATER OUTLET NPT | E COWLING DEPTH | F SKID LENGTH | G OVERALL DEPTH | H PULL SPACE | SHIPPING WEIGHT LBS |
|----------------|------------------------|----------------------------|------------------|------------------|--------------------------|---------------------------|-----------------|---------------|-----------------|--------------|---------------------|
| | 40°F - 140°F | 180°F (20°ΔT) | | | | | | | | | |
| 300 L 500A-QW | 140 | 12 | 2 | 3 | 3/4 | 3/4 | 61 | 54-1/2 | 88 | 34 | 1670 |
| 600 L 500A-QW | 270 | 23 | 2 | 3 | 1 | 1 | 61 | 54-1/2 | 88 | 58 | 1680 |
| 800 L 500A-QW | 380 | 32 | 2 | 3 | 1-1/4 | 1-1/4 | 61 | 54-1/2 | 88 | 46 | 1720 |
| 1100 L 500A-QW | 510 | 43 | 2 | 3 | 1-1/4 | 1-1/4 | 61 | 54-1/2 | 88 | 58 | 1730 |
| 1500 L 500A-QW | 690 | 58 | 2 | 3 | 1-1/2 | 1-1/2 | 61 | 54-1/2 | 89 | 46 | 1810 |
| 2000 L 500A-QW | 950 | 80 | 2 | 3 | 2 | 2 | 61 | 54-1/2 | 89 | 58 | 1830 |
| 2300 L 500A-QW | 1020 | 87 | 2-1/2 | 3 | 2 | 2 | 61 | 54-1/2 | 89 | 40 | 1910 |
| 2600 L 500A-QW | 1200 | 102 | 2-1/2 | 3 | 2-1/2 | 2-1/2 | 61 | 54-1/2 | 96 | 46 | 1920 |
| 3000 L 500A-QW | 1420 | 120 | 2-1/2 | 3 | 2-1/2 | 2-1/2 | 61 | 54-1/2 | 96 | 52 | 2000 |
| 3500 L 500A-QW | 1630 | 138 | 2-1/2 | 3 | 2-1/2 | 2-1/2 | 61 | 54-1/2 | 96 | 58 | 2020 |
| 4000 L 500A-QW | 1790 | 152 | 2-1/2 | 3 | 3 | 3 | 61 | 54-1/2 | 96 | 46 | 2100 |
| 4300 L 500A-QW | 2110 | 179 | 2-1/2 | 3 | 3 | 3 | 61 | 54-1/2 | 96 | 52 | 2120 |
| 4500 L 500A-QW | 2390 | 203 | 2-1/2 | 3 | 3 | 3 | 61 | 54-1/2 | 96 | 58 | 2140 |
| 6300 L 500A-QW | 2960 | 251 | 2-1/2 | 3 | 4 | 4 | 61 | 54-1/2 | 96 | 52 | 2240 |
| 8200 L 500A-QW | 3800 | 322 | 2-1/2 | 3 | 4 | 4 | 61 | 54-1/2 | 96 | 52 | 2400 |
| | gph | gpm | | | | | | | | | |

* For recoveries, boiler water flows and valve sizes at different boiler water temperatures and temperature rises, refer to forms PV 6909.



Electrical requirements: 120V, 1Ø, 60 Hz., 15 amps maximum, to a single point connection. When using 4" boiler water valve, the supply and return piping is to be field supplied and installed. Dimensions are in inches unless otherwise noted. For standard and optional equipment, see form PV 8163. If using glycol, consult your representative.



PVI RESERVES THE RIGHT TO CHANGE THE DESIGN AND SPECIFICATION WITHOUT NOTICE.

