

QuickDraw® BOILER WATER SINGLE-WALL PACKAGED WATER HEATER with AquaPLEX® STORAGE TANK

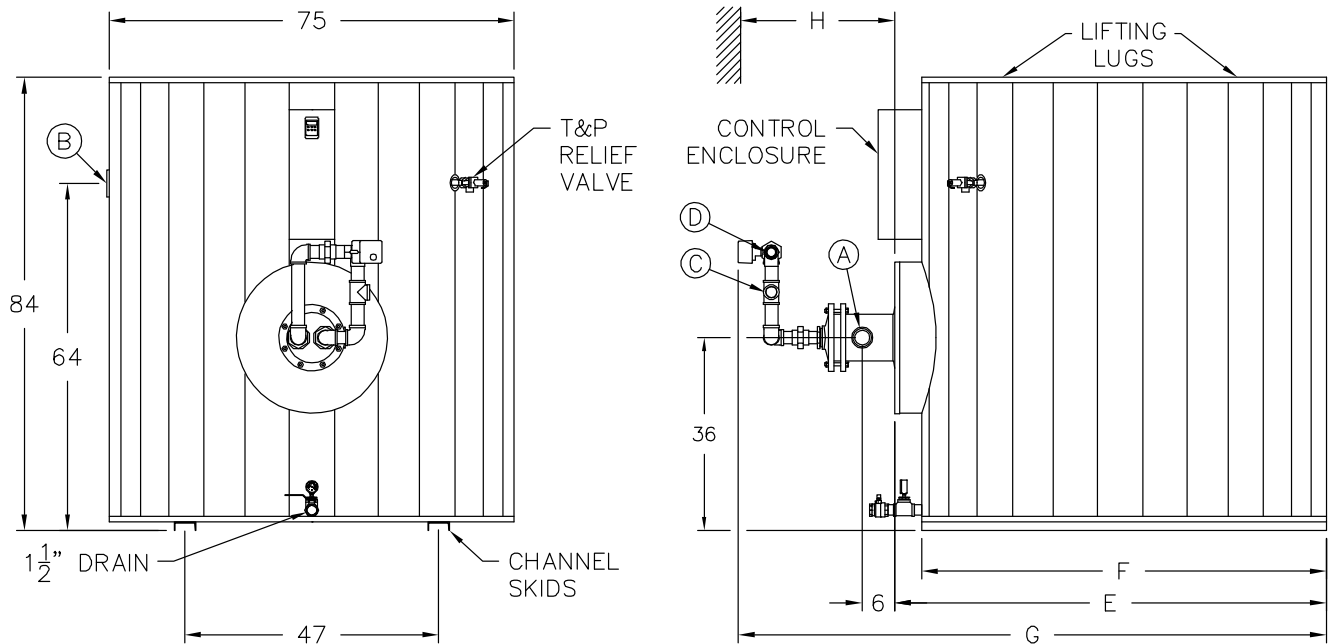
TANK SERIES 1000 GALLON

MODEL NUMBER	STANDARD RECOVERY RATE	STANDARD BOILER WATER FLOW	A COLD INLET NPT	B HOT OUTLET NPT	C BOILER WATER INLET NPT	D BOILER WATER OUTLET NPT	E COWLING DEPTH	F SKID LENGTH	G OVERALL DEPTH	H PULL SPACE	SHIPPING WEIGHT LBS
	40°F - 140°F	180°F (20°ΔT)									
300 L 1000A-QW	140	12	2	3	3/4	3/4	80	75	107	34	3160
600 L 1000A-QW	270	23	2	3	1	1	80	75	107	58	3160
800 L 1000A-QW	380	32	2	3	1-1/4	1-1/4	80	75	107	46	3200
1100 L 1000A-QW	510	43	2	3	1-1/4	1-1/4	80	75	107	58	3220
1500 L 1000A-QW	690	58	2	3	1-1/2	1-1/2	80	75	108	46	3300
2000 L 1000A-QW	950	80	2	3	2	2	80	75	108	58	3320
2300 L 1000A-QW	1020	87	2-1/2	3	2	2	80	75	108	40	3400
2600 L 1000A-QW	1200	102	2-1/2	3	2-1/2	2-1/2	80	75	115	46	3410
3000 L 1000A-QW	1420	120	2-1/2	3	2-1/2	2-1/2	80	75	115	52	3500
3500 L 1000A-QW	1630	138	2-1/2	3	2-1/2	2-1/2	80	75	115	58	3510
4000 L 1000A-QW	1790	152	2-1/2	3	3	3	80	75	115	46	3590
4300 L 1000A-QW	2110	179	2-1/2	3	3	3	80	75	115	52	3610
4500 L 1000A-QW	2390	203	2-1/2	3	3	3	80	75	115	58	3640
6300 L 1000A-QW	2960	251	2-1/2	3	4	4	80	75	115	52	3730
8200 L 1000A-QW	3800	322	2-1/2	3	4	4	80	75	115	52	3890
	gph	gpm									

* For recoveries, boiler water flows and valve sizes at different boiler water temperatures and temperature rises, refer to forms PV 6909.

Electrical requirements: 120V, 1Ø, 60 Hz., 15 amps maximum, to a single point connection. When using 4" boiler water valve, the supply and return piping is to be field supplied and installed. Dimensions are in inches unless otherwise noted.

For standard and optional equipment, see form PV 8163.



PVI RESERVES THE RIGHT TO CHANGE THE DESIGN AND SPECIFICATION WITHOUT NOTICE.



PVI
A WATTS Brand

PVI Industries, LLC
Fort Worth, TX • (800) 784-8326 • www.pvi.com