

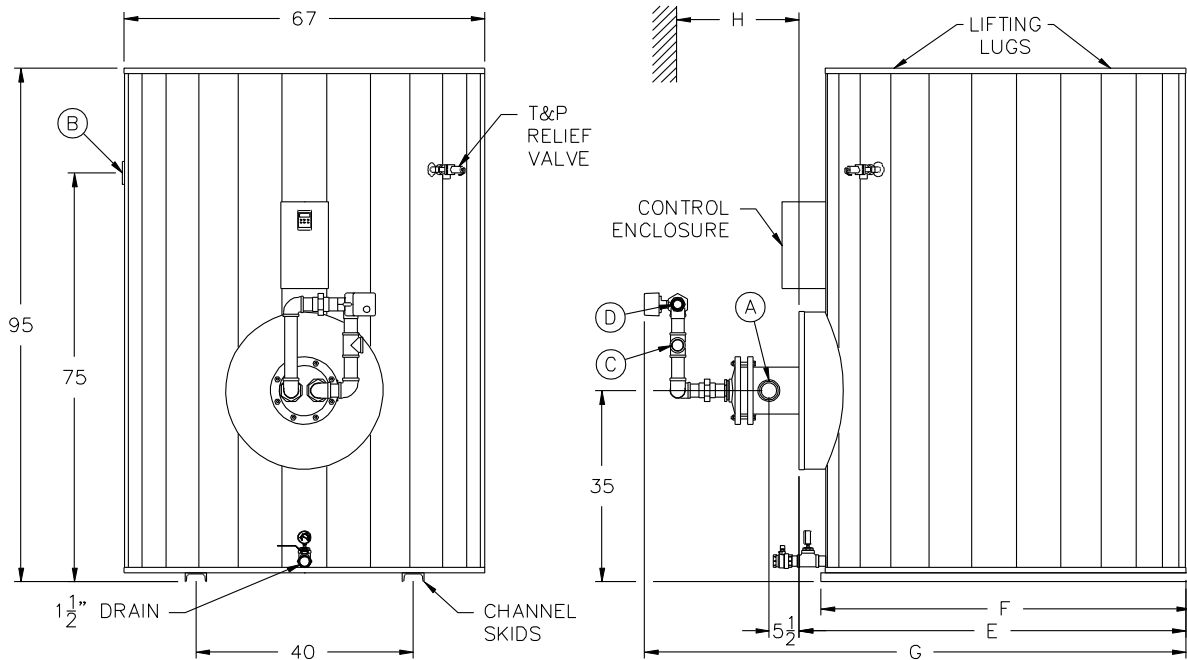
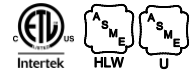
QuickDraw® BOILER WATER DOUBLE-WALL PACKAGED WATER HEATER with AquaPLEX® STORAGE TANK

TANK SERIES 900 GALLON

MODEL NUMBER	STANDARD RECOVERY RATE	STANDARD BOILER WATER FLOW	A COLD INLET NPT	B HOT OUTLET NPT	C BOILER WATER INLET NPT	D BOILER WATER OUTLET NPT	E COWLING DEPTH	F SKID LENGTH	G OVERALL DEPTH	H PULL SPACE	SHIPPING WEIGHT LBS
	40°F - 140°F	180°F (20°ΔT)									
250 L 900A-QWD	130	11	2	3	3/4	3/4	71	68	98	34	2280
500 L 900A-QWD	240	20	2	3	1	1	71	68	98	58	2290
700 L 900A-QWD	340	29	2	3	1-1/4	1-1/4	71	68	98	40	2330
900 L 900A-QWD	440	38	2	3	1-1/4	1-1/4	71	68	98	40	2360
1300 L 900A-QWD	620	53	2	3	1-1/2	1-1/2	71	68	99	40	2450
1900 L 900A-QWD	950	80	2-1/2	3	2	2	71	68	99	40	2590
2200 L 900A-QWD	1090	92	2-1/2	3	2	2	71	68	99	40	2630
2800 L 900A-QWD	1430	122	2-1/2	3	2-1/2	2-1/2	71	68	106	40	2680
3400 L 900A-QWD	1620	138	2-1/2	3	2-1/2	2-1/2	71	68	106	40	2860
4200 L 900A-QWD	2100	179	2-1/2	3	3	3	71	68	106	58	2950
5400 L 900A-QWD	2620	222	2-1/2	3	4	4	71	68	106	52	3060
6100 L 900A-QWD	2930	249	2-1/2	3	4	4	71	68	106	46	3220
6900 L 900A-QWD	3370	286	2-1/2	3	4	4	71	68	106	52	3300
	gph	gpm									

* For recoveries, boiler water flows and valve sizes at different boiler water temperatures and temperature rises, refer to forms PV 6910.

Electrical requirements: 120V, 1Ø, 60 Hz., 15 amps maximum, to a single point connection. When using 4" boiler water valve, the supply and return piping is to be field supplied and installed. Dimensions are in inches unless otherwise noted. For standard and optional equipment, see form PV 8163. If using glycol, consult your representative.



PVI RESERVES THE RIGHT TO CHANGE THE DESIGN AND SPECIFICATION WITHOUT NOTICE.



PVI Industries, LLC
Fort Worth, TX • (800) 784-8326 • www.pvi.com