

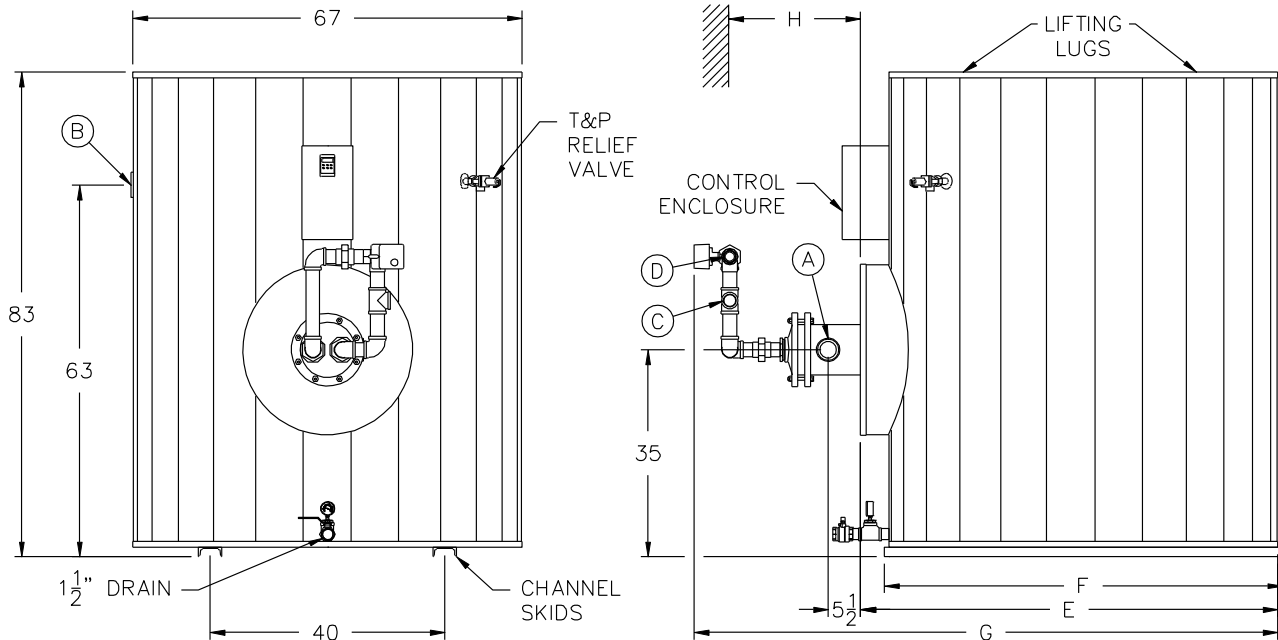
# QuickDraw® BOILER WATER DOUBLE-WALL PACKAGED WATER HEATER with AquaPLEX® STORAGE TANK

## TANK SERIES 750 GALLON

MODEL NUMBER	STANDARD RECOVERY RATE	STANDARD BOILER WATER FLOW	A COLD INLET NPT	B HOT OUTLET NPT	C BOILER WATER INLET NPT	D BOILER WATER OUTLET NPT	E COWLING DEPTH	F SKID LENGTH	G OVERALL DEPTH	H PULL SPACE	SHIPPING WEIGHT LBS
	40°F - 140°F	180°F (20°ΔT)									
250 L 750A-QWD	130	11	2	3	3/4	3/4	71	68	98	34	2050
500 L 750A-QWD	240	20	2	3	1	1	71	68	98	58	2060
700 L 750A-QWD	340	29	2	3	1-1/4	1-1/4	71	68	98	40	2100
900 L 750A-QWD	440	38	2	3	1-1/4	1-1/4	71	68	98	40	2140
1300 L 750A-QWD	620	53	2	3	1-1/2	1-1/2	71	68	99	40	2220
1900 L 750A-QWD	950	80	2-1/2	3	2	2	71	68	99	40	2360
2200 L 750A-QWD	1090	92	2-1/2	3	2	2	71	68	99	40	2400
2800 L 750A-QWD	1430	122	2-1/2	3	2-1/2	2-1/2	71	68	106	40	2440
3400 L 750A-QWD	1620	138	2-1/2	3	2-1/2	2-1/2	71	68	106	40	2640
4200 L 750A-QWD	2100	179	2-1/2	3	3	3	71	68	106	58	2720
5400 L 750A-QWD	2620	222	2-1/2	3	4	4	71	68	106	52	2830
6100 L 750A-QWD	2930	249	2-1/2	3	4	4	71	68	106	46	2990
6900 L 750A-QWD	3370	286	2-1/2	3	4	4	71	68	106	52	3070
	gph	gpm									

\* For recoveries, boiler water flows and valve sizes at different boiler water temperatures and temperature rises, refer to forms PV 6910.

**Electrical requirements:** 120V, 1Ø, 60 Hz., 15 amps maximum, to a single point connection.  
When using 4" boiler water valve, the supply and return piping is to be field supplied and installed.  
Dimensions are in inches unless otherwise noted.  
For standard and optional equipment, see form PV 8163.  
If using glycol, consult your representative.



PVI RESERVES THE RIGHT TO CHANGE THE DESIGN AND SPECIFICATION WITHOUT NOTICE.



PVI Industries, LLC  
Fort Worth, TX • (800) 784-8326 • www.pvi.com