

# QuickDraw® BOILER WATER DOUBLE-WALL PACKAGED WATER HEATER with AquaPLEX® STORAGE TANK

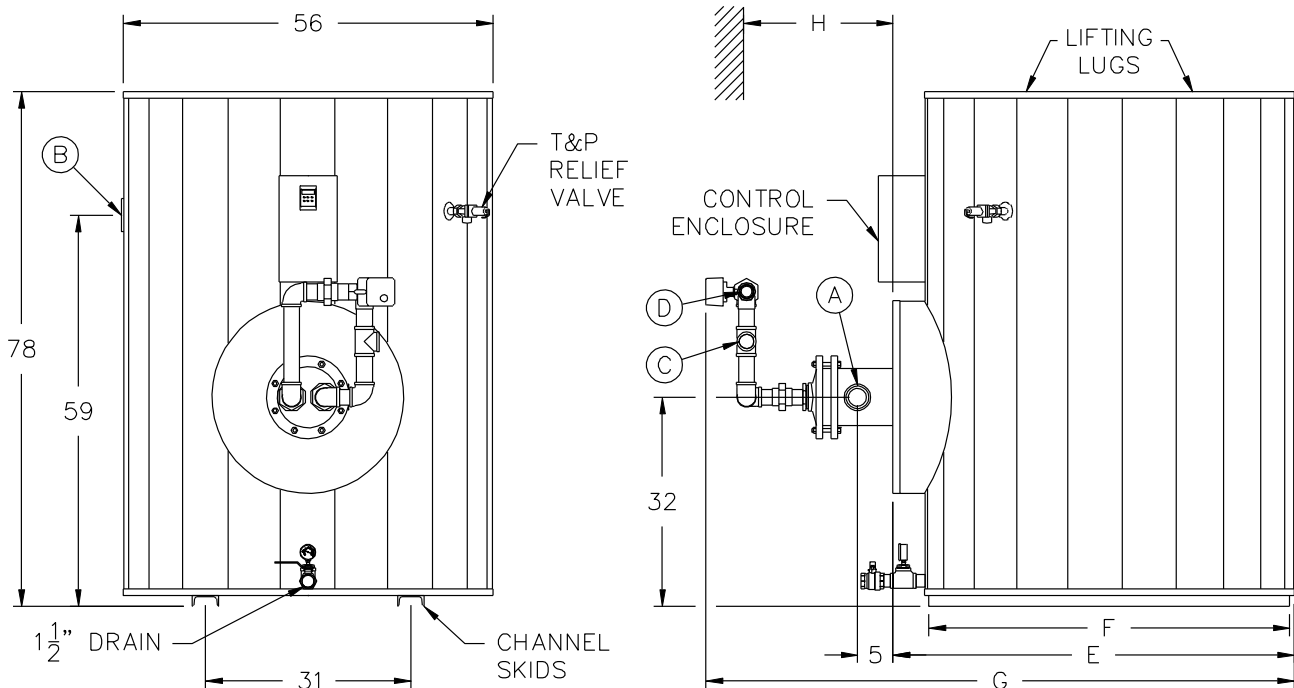
## TANK SERIES 500 GALLON

MODEL NUMBER	STANDARD RECOVERY RATE	STANDARD BOILER WATER FLOW	A COLD INLET NPT	B HOT OUTLET NPT	C BOILER WATER INLET NPT	D BOILER WATER OUTLET NPT	E COWLING DEPTH	F SKID LENGTH	G OVERALL DEPTH	H PULL SPACE	SHIPPING WEIGHT LBS
	40°F - 140°F	180°F (20°ΔT)									
250 L 500A-QWD	130	11	2	3	3/4	3/4	61	54-1/2	88	34	1680
500 L 500A-QWD	240	20	2	3	1	1	61	54-1/2	88	58	1690
700 L 500A-QWD	340	29	2	3	1-1/4	1-1/4	61	54-1/2	88	40	1740
900 L 500A-QWD	440	38	2	3	1-1/4	1-1/4	61	54-1/2	88	40	1770
1300 L 500A-QWD	620	53	2	3	1-1/2	1-1/2	61	54-1/2	89	40	1850
1900 L 500A-QWD	950	80	2-1/2	3	2	2	61	54-1/2	89	40	2000
2200 L 500A-QWD	1090	92	2-1/2	3	2	2	61	54-1/2	89	40	2030
2800 L 500A-QWD	1430	122	2-1/2	3	2-1/2	2-1/2	61	54-1/2	96	40	2080
3400 L 500A-QWD	1620	138	2-1/2	3	2-1/2	2-1/2	61	54-1/2	96	40	2270
4200 L 500A-QWD	2100	179	2-1/2	3	3	3	61	54-1/2	96	58	2350
5400 L 500A-QWD	2620	222	2-1/2	3	4	4	61	54-1/2	96	52	2470
6100 L 500A-QWD	2930	249	2-1/2	3	4	4	61	54-1/2	96	46	2630
6900 L 500A-QWD	3370	286	2-1/2	3	4	4	61	54-1/2	96	52	2700
	gph	gpm									

\* For recoveries, boiler water flows and valve sizes at different boiler water temperatures and temperature rises, refer to forms PV 6910.



**Electrical requirements:** 120V, 1Ø, 60 Hz., 15 amps maximum, to a single point connection.  
When using 4" boiler water valve, the supply and return piping is to be field supplied and installed.  
Dimensions are in inches unless otherwise noted.  
For standard and optional equipment, see form PV 8163.  
If using glycol, consult your representative.



PVI RESERVES THE RIGHT TO CHANGE THE DESIGN AND SPECIFICATION WITHOUT NOTICE.



PVI Industries, LLC  
Fort Worth, TX • (800) 784-8326 • www.pvi.com