

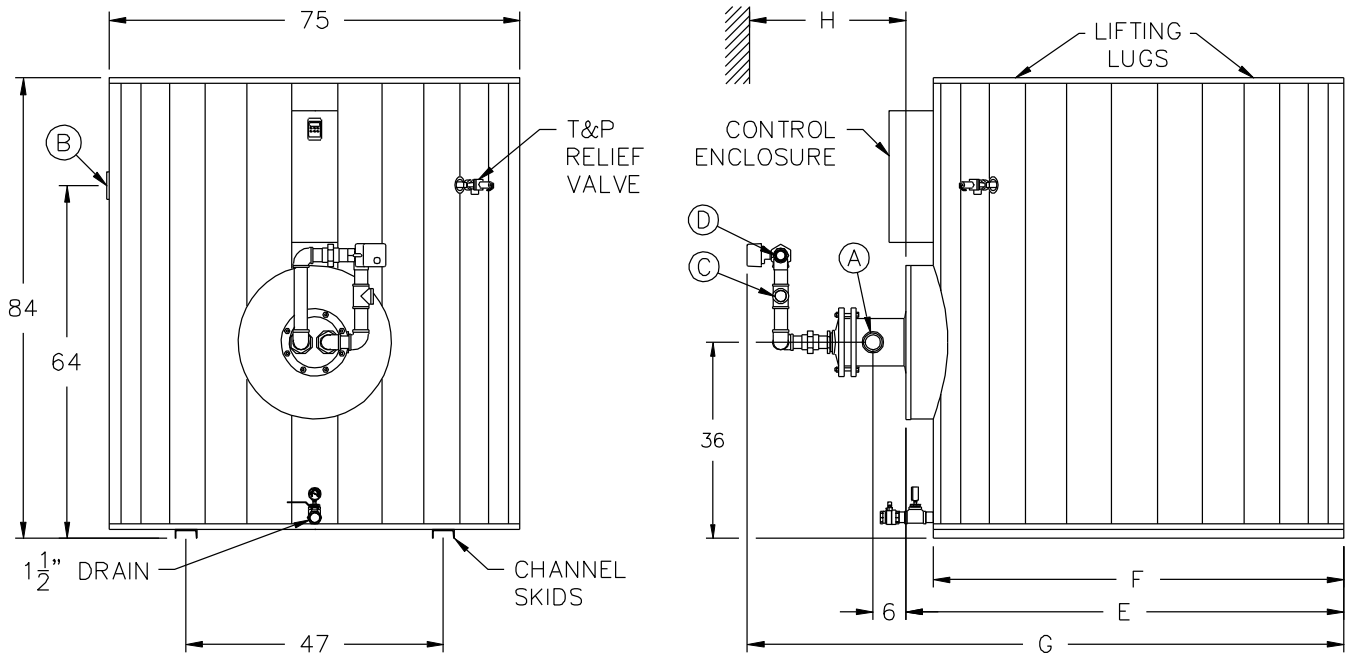
# QuickDraw® BOILER WATER DOUBLE-WALL PACKAGED WATER HEATER with AquaPLEX® STORAGE TANK

## TANK SERIES 1000 GALLON

MODEL NUMBER	STANDARD RECOVERY RATE	STANDARD BOILER WATER FLOW	A COLD INLET NPT	B HOT OUTLET NPT	C BOILER WATER INLET NPT	D BOILER WATER OUTLET NPT	E COWLING DEPTH	F SKID LENGTH	G OVERALL DEPTH	H PULL SPACE	SHIPPING WEIGHT LBS
	40°F - 140°F	180°F (20°ΔT)									
250 L 1000A-QWD	130	11	2	3	3/4	3/4	80	75	107	34	3170
500 L 1000A-QWD	240	20	2	3	1	1	80	75	107	58	3180
700 L 1000A-QWD	340	29	2	3	1-1/4	1-1/4	80	75	107	40	3220
900 L 1000A-QWD	440	38	2	3	1-1/4	1-1/4	80	75	107	40	3260
1300 L 1000A-QWD	620	53	2	3	1-1/2	1-1/2	80	75	108	40	3340
1900 L 1000A-QWD	950	80	2-1/2	3	2	2	80	75	108	40	3490
2200 L 1000A-QWD	1090	92	2-1/2	3	2	2	80	75	108	40	3520
2800 L 1000A-QWD	1430	122	2-1/2	3	2-1/2	2-1/2	80	75	115	40	3570
3400 L 1000A-QWD	1620	138	2-1/2	3	2-1/2	2-1/2	80	75	115	40	3760
4200 L 1000A-QWD	2100	179	2-1/2	3	3	3	80	75	115	58	3840
5400 L 1000A-QWD	2620	222	2-1/2	3	4	4	80	75	115	52	3960
6100 L 1000A-QWD	2930	249	2-1/2	3	4	4	80	75	115	46	4120
6900 L 1000A-QWD	3370	286	2-1/2	3	4	4	80	75	115	52	4190
	gph	gpm									

\* For recoveries, boiler water flows and valve sizes at different boiler water temperatures and temperature rises, refer to forms PV 6910.

**Electrical requirements:** 120V, 1Ø, 60 Hz., 15 amps maximum, to a single point connection.  
When using 4" boiler water valve, the supply and return piping is to be field supplied and installed.  
Dimensions are in inches unless otherwise noted.  
For standard and optional equipment, see form PV 8163.  
If using glycol, consult your representative.



PVI RESERVES THE RIGHT TO CHANGE THE DESIGN AND SPECIFICATION WITHOUT NOTICE.



PVI Industries, LLC  
Fort Worth, TX • (800) 784-8326 • www.pvi.com