

# EZ Plate® Dual Boiler Water Semi-Instantaneous Water Heater

Tank Series 750 Gal • AquaPLEX® Duplex Stainless Steel

Model Number	Amps @120V ①	A	B	Shipping Weight lbs
600-2 L 750A-TRBPDW	5	87	42	2155
900-2 L 750A-TRBPDW	5	87	42	2215
1200-2 L 750A-TRBPDW	5	87	42	2245
1800-2 L 750A-TRBPDW	7	87	42	2360
2400-2 L 750A-TRBPDW	7	87	42	2450
3000-2 L 750A-TRBPDW	7	87	42	2435
3600-2 L 750A-TRBPDW	11	84	42	2600
4500-2 L 750A-TRBPDW	11	84	42	2645
5400-2 L 750A-TRBPDW	13	88	51	2795

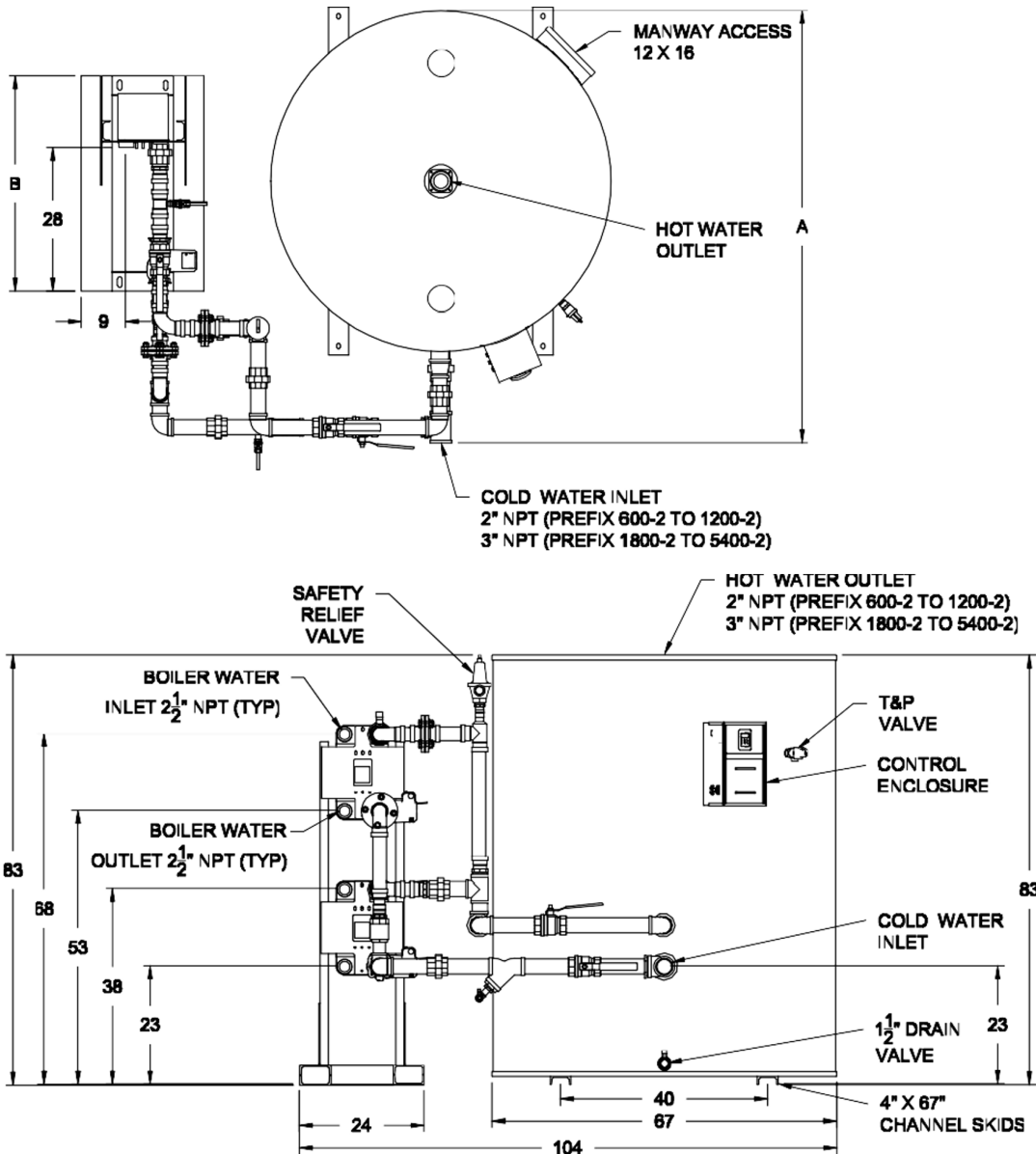
Refer to PV 8601, PV 8602 and PV 8603 for information on heat exchanger recoveries, pressure drop and boiler water flow requirements with various entering boiler water temperatures and domestic water temperatures.

Refer to PV 8600 for standard and optional equipment.

① Optional boiler water valve adds 2 amps total

Recommended service clearance is 18 inches on all sides.

Completed piping assembly is factory fit between the exchanger and tank and separated at unions (or flanges) for shipping. Tank and heat exchanger ship separately for field assembly to piping assembly. If using glycol, consult your representative.



PVI reserves the right to change the design and specification without notice.

Hot Water Solutions

PVI Industries • Fort Worth, TX

© 2023 PVI