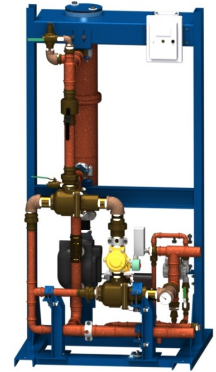


# COBREX® INSTANTANEOUS

## Double-wall Instantaneous Steam-to-Water Heater



### STANDARD FEATURES and EQUIPMENT

#### PERFORMANCE

- Domestic water at 120°, 140° or 160° using 5 to 125 psi steam (steam pressure above 15 psi requires field installed steam pressure regulating valve)

#### HEAT EXCHANGER

- 100% copper shell-and-tube, counter-flow, double wall heat exchanger with enhanced copper tubing for improved heat transfer
- ASME Section VIII, Div. 1 stamped and National Board Registered for 150 psi maximum allowable working pressure
- Fully assembled copper, brass and bronze waterside piping, valves and fittings
- Float and thermostatic steam trap
- Threaded clean-in-place fittings to allow heat exchanger cleaning without disassembly
- ASME rated pressure relief valve

#### OPERATING CONTROLS AND SAFETIES

- Factory ready for connection to the building's domestic water re-circulation piping
- Dual independent, self-contained thermostatic temperature control valves
- Over-temperature solenoid shutoff valve
- Dual independent temperature limiting devices (high limit controls)
- Domestic water piping assembly includes press-form fittings (Viega® ProPress®)
- Temperature gauge at hot water outlet
- Intra-skid circulator on 140°F and 160°F models
- Heavy-duty steel stand with durable powder-coated finish

#### WARRANTY and SERVICE POLICY

- 3-year heat exchanger warranty (PV8432) ①
  - 1-year cost-free service policy (PV551) ①
- Conditions exist outside of the continental United States

#### CODES AND STANDARDS

- Intertek/ETL listed:  
NSF 372 lead free

① See complete warranties and service policies for full details.

PVI reserves the right to change the design and specification without notice.

Viega and ProPress are registered trademarks of Viega GmbH & Co.

### FACTORY OPTIONS PACKAGES

- 2** ELECTRONIC TEMPERATURE MONITOR PACKAGE
  - Electronic temperature monitor with LED readout
  - Local alarm
  - 485 serial cable to connect electronic operator to BAS (Modbus RTU)

### FACTORY INSTALLED INDIVIDUAL OPTIONS

- K** Intra-skid circulator on 120°F models
- L** Condensate subcooler system with failed trap protection

### FIELD INSTALLED OPTIONS (ref form PV8437)

- Steam pressure regulating valve and pilot for supply steam pressures  $\geq 16$  to 125 psi (consult rep for PN)
- Y-strainer for supply steam (consult rep for PN)
- Steam pressure gauge
  - $< 30$  psig (PN 128502)
  - $\geq 30$  psig (PN 128503)
- Water pressure gauge (PN 75085)  
(PN 146456 for 160°F models)
- Inlet water temperature gauge (PN 78396)
- Auxiliary condensate trap for supply steam (PN 68466)
- Common Steam Header Manifold and Isolation Valves for Dual Heat Exchanger models:
  - Steam Header 3 x 3 x 4 for Config 4 (PN 151607)
  - Steam Header 3 x 3 x 6 for Config 6 (PN 151608)
  - 3" Gate valve for Steam Isolation (PN 105272)
  - Kit, Bolt nut gasket 3" for Isolation valve (PN 151731)

### CUSTOM CONFIGURATION

Consult representative for all additional custom options

**PART NUMBER NUMBERING SEQUENCE**  
**BASE MODEL# + "PACKAGES" + "OPTIONS"**  
Example: CCX 140 20 15-2L



PVI Industries, LLC  
Fort Worth, TX • (800) 784-8326 • www.pvi.com