

For Commercial & Residential

Job Name _____
 Job Location _____
 Engineer _____
 Approval _____
 Tag _____

Contractor _____
 Approval _____
 Contractor's P.O. No. _____
 Representative _____

BFD-130-SO

Adjustable Floor Drain with 12"x12" Square Top, Membrane Clamp, Side Outlet



BFD-130-SO

Specification

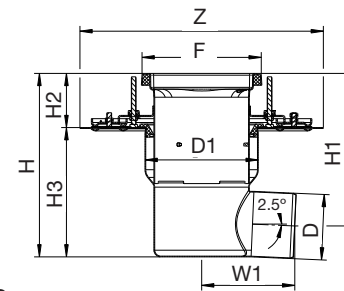
BLÜCHER BFD-130-SO AISI Type 304 stainless steel adjustable floor drain with 12"x12"(305x305) square top, membrane clamping flange, 1/8"(3) grating (standard), and side outlet.

Dimensions

Model No.	Global Part #	Pipe Size D	D1	Top Size		H Adjustable	H1 Adjustable	H2 Adjustable	H3	W1
				F	Z					
BFD-134-SO	771.403.110	4"(110)	11 1/2"(291)	12"x12" (300x300)	20"(507)	12 5/16"(313) 14 11/16"(373)	10 1/4"(261) 12 5/8"(321)	3 5/8"(91) 6"(151)	8 3/4"(222)	8 1/8"(206)
BFD-136-SO	771.403.160	6"(160)	11 1/2"(291)	12"x12" (300x300)	20"(507)	12 5/16"(313) 14 11/16"(373)	9 5/8"(245) 13 11/16"(348)	3 5/8"(91) 6"(151)	8 3/4"(222)	13 7/16"(341)

Options (Select One Or More)				
Suffix	Description			
-150	1/2 Grate (Standard Grating)			<input type="checkbox"/>
-175	3/4 Grate (Standard Grating)			<input type="checkbox"/>
-316	Type 316 Stainless Steel			<input type="checkbox"/>
-B	Sediment Basket			<input type="checkbox"/>
-P	Stainless Steel P-Trap			<input type="checkbox"/>
-R	8" Round Top			<input type="checkbox"/>
-SB	Sand Bucket			<input type="checkbox"/>
-TPT	Trap Primer Tapping			<input type="checkbox"/>
-VP	Grate Secured w/Vandal Proof Screws			<input type="checkbox"/>

Optional Gratings (Select One)			
	Suffix	Description	
	-None	1/8" (Standard)	<input type="checkbox"/>
	-HG	Hygienic-Pro	<input type="checkbox"/>
	-LG	Ladder	<input type="checkbox"/>
	-MG	Mesh	<input type="checkbox"/>
	-SG	Slot	<input type="checkbox"/>



Approvals



Compliance with NSF/ANSI/3-A 14159-1-Hygiene Requirements for the Design of Meat and Poultry Processing Equipment



NOTICE

The information contained herein is not intended to replace the full product installation and safety information available or the experience of a trained product installer. You are required to thoroughly read all installation instructions and product safety information before beginning the installation of this product.

Please see ES-B-Commercial/Industrial Square Gratings for more information.



A WATTS Brand