

For Commercial And Industrial Applications

Job Name _____

Contractor _____

Job Location _____

Approval _____

Engineer _____

Contractor's P.O. No. _____

Approval _____

Representative _____

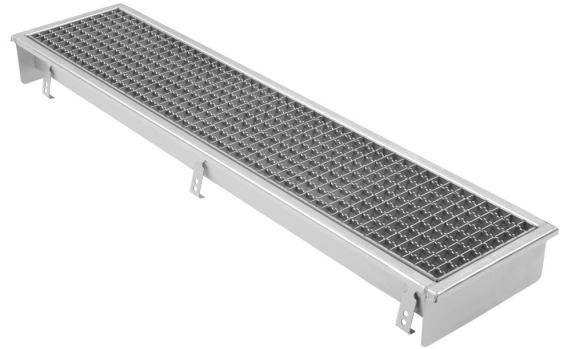
Tag _____

Series BT6

6" Wide Pre-Sloped Trench Drain

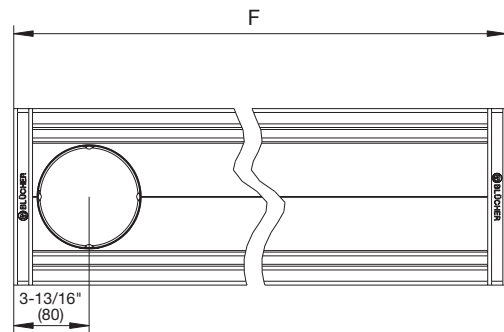
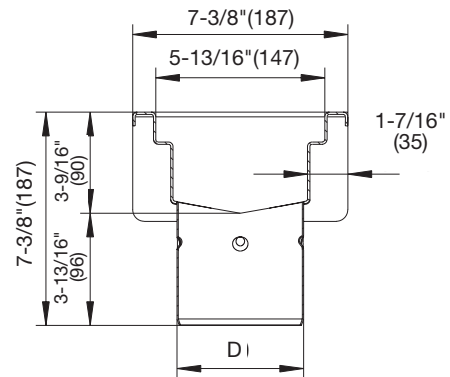
Specification:

BLÜCHER Series BT6 AISI Type 304 stainless steel pre-sloped trench drain, 6"(160) wide x (specify) long, with 1% longitudinal slope and 160 degree cross fall, 1"(25) thick mesh grating, and spigot outlet.



OPTIONAL GRATING:			
SUFFIX	DESCRIPTION		
-HG	Hygienic-Pro Grating		<input type="checkbox"/>
-LG	Ladder Grating		<input type="checkbox"/>
-SG	Slot Grating		<input type="checkbox"/>
-SH	Shower Grating		<input type="checkbox"/>
-XLG	Extra Heavy Duty Ladder Grating		<input type="checkbox"/>

OPTIONS			
SUFFIX	DESCRIPTION		
-316	Type 316 Stainless Steel		<input type="checkbox"/>
-B	Sediment Basket		<input type="checkbox"/>
-FC	Outlet w/Membrane Clamp		<input type="checkbox"/>
-LD	Grate Locking Device		<input type="checkbox"/>
-P	Stainless Steel P-Trap		<input type="checkbox"/>



Dimensional Chart

MODEL NO.	PIPE SIZE	LENGTH
	D	F
Series BT6	Specify	Specify

Global Ref. # 670CH

NOTICE

The information contained herein is not intended to replace the full product installation and safety information available or the experience of a trained product installer. You are required to thoroughly read all installation instructions and product safety information before beginning the installation of this product.

Approvals



Compliance with NSF/ANSI/3-A 14159-1-Hygiene Requirements for the Design of Meat and Poultry Processing Equipment



* Product is certified to the uniform plumbing code ASME A112.6.3



A WATTS Brand